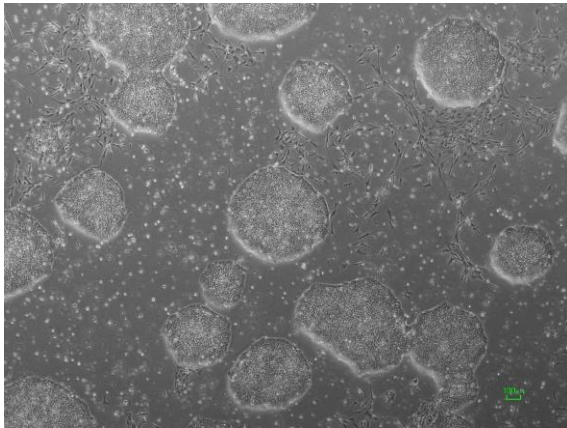
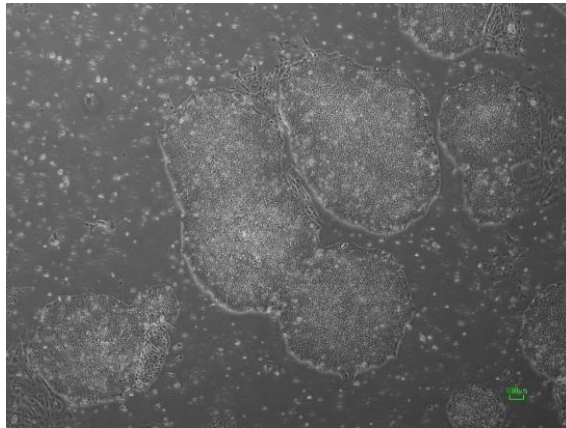


【 CiRA-jk-0047 】 Morphology of iPSC colonies

CiRA -jk-0047-A: passage-2



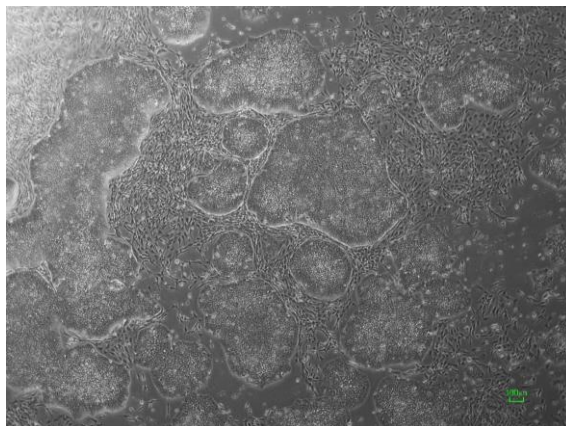
CiRA -jk-0047-B: passage-2



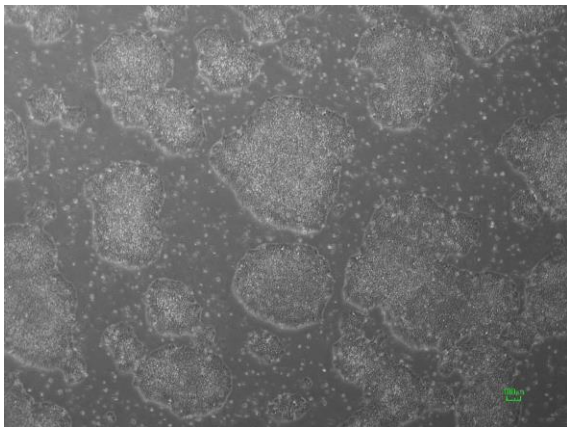
CiRA -jk-0047-C: passage-2



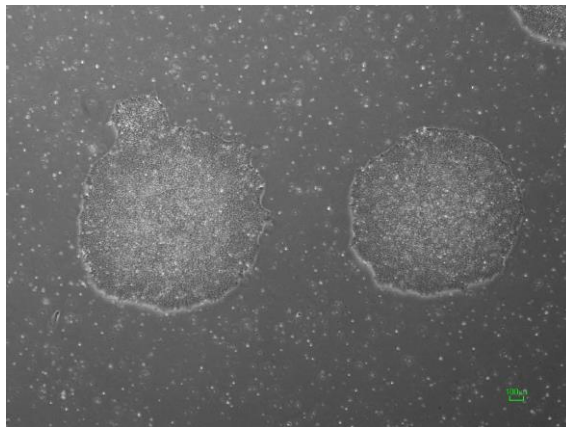
CiRA -jk-0047-D: passage-2



CiRA -jk-0047-E: passage-2



CiRA -jk-0047-F: passage-2



(All images were captured at 4x magnification)